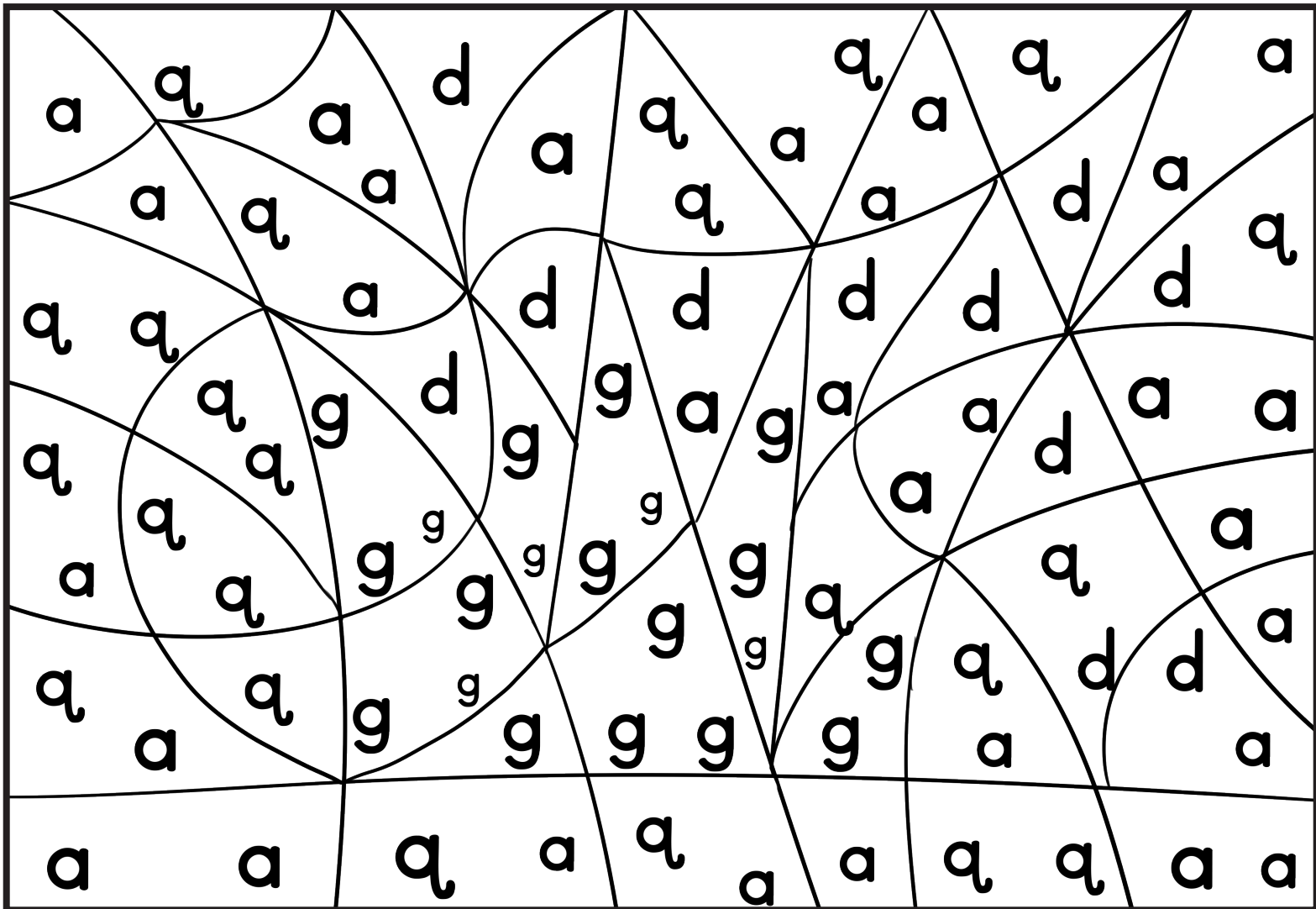
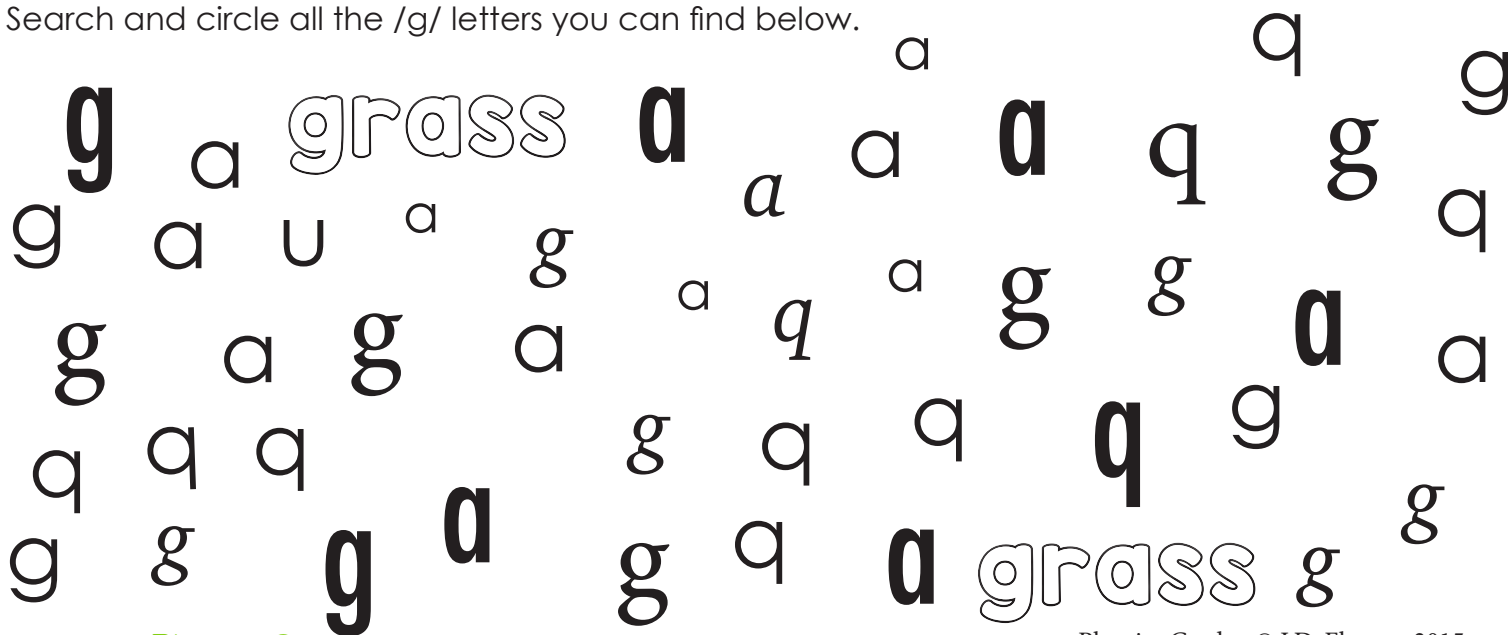


Color the pictures that have a /g/ sound in them. Find and color all the letters /g/.



Search and circle all the /g/ letters you can find below.



# Phonics

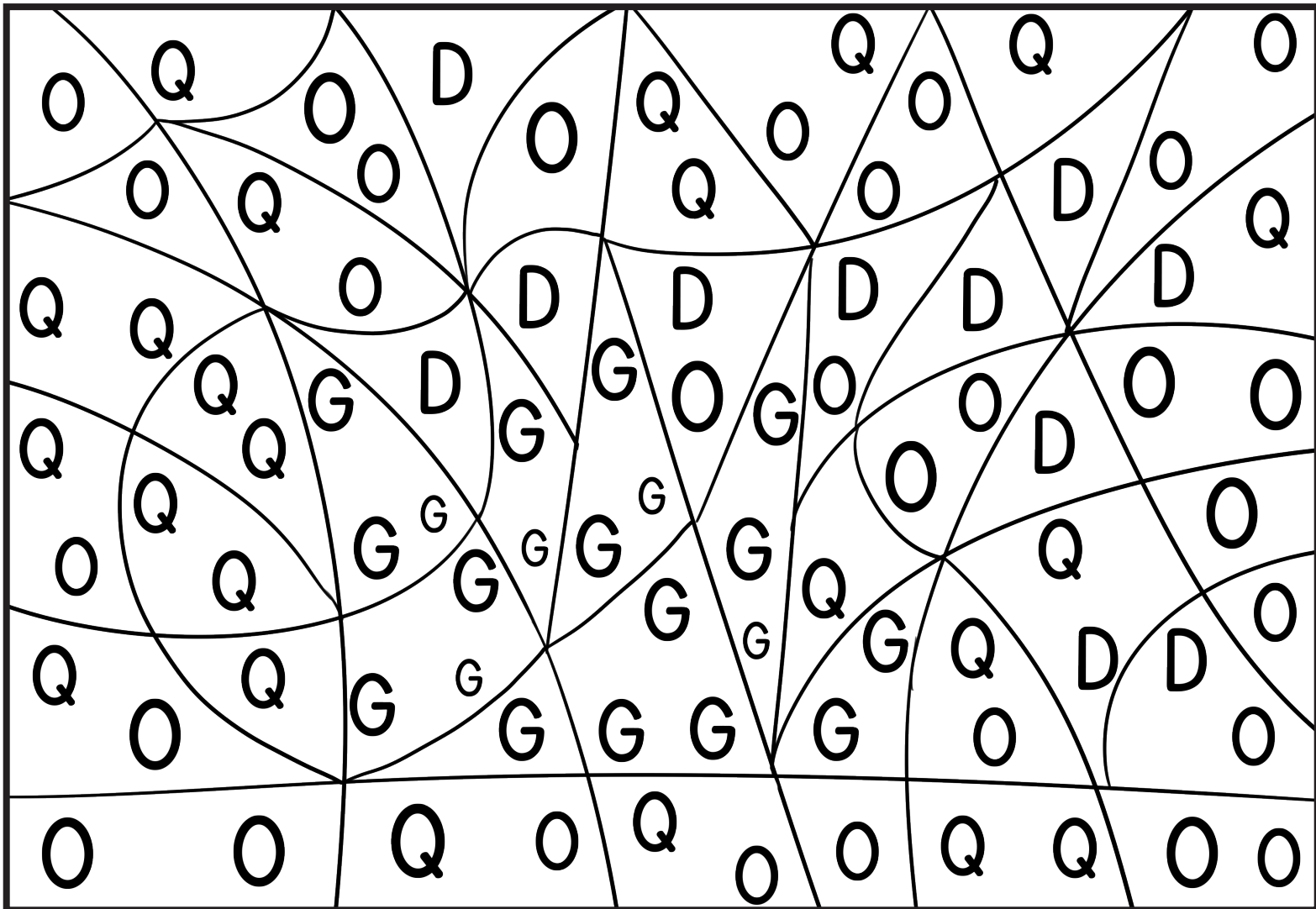


Name \_\_\_\_\_

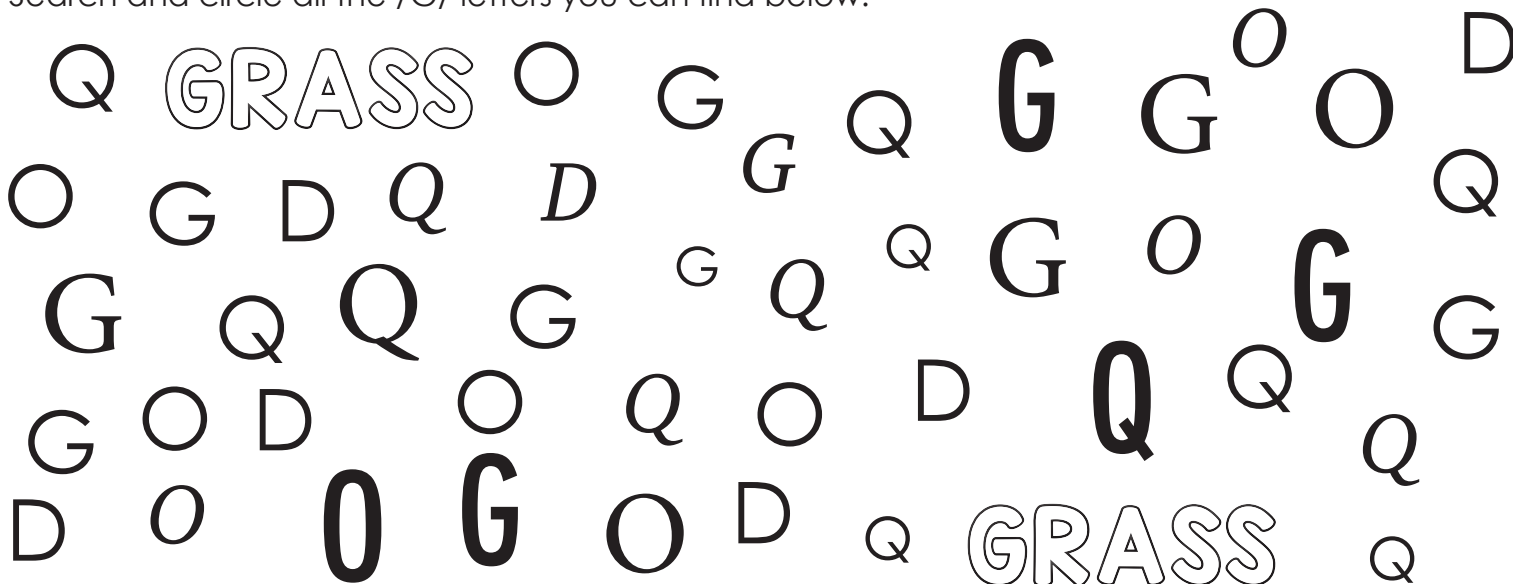
Color the pictures that have a /g/ sound in them. Find and color all the letters /g/.

The illustration shows a garden scene with various plants and flowers. The letters 'a', 'g', and 'd' are scattered throughout the scene. The letters 'a' and 'g' are lowercase, while 'd' is lowercase. The letters are placed in various orientations and sizes, some appearing to be on leaves or stems. The goal is to identify and color the letters 'g' and 'g'.

Color the pictures that have a /G/ sound in them. Find and color all the letters /G/.



Search and circle all the /G/ letters you can find below.



# Phonics



Name \_\_\_\_\_

Color the pictures that have a /g/ sound in them. Find and color all the letters /g/.

