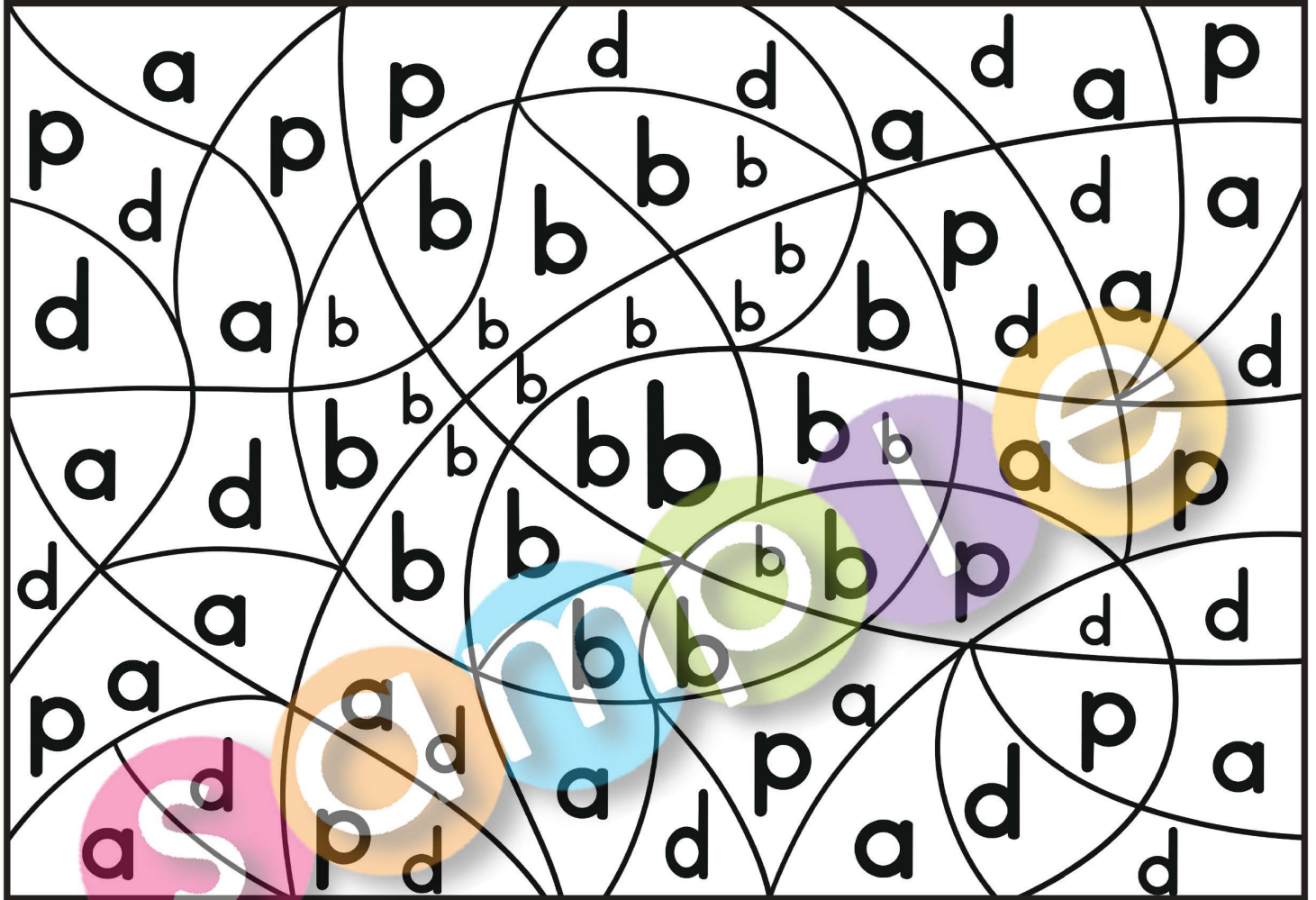
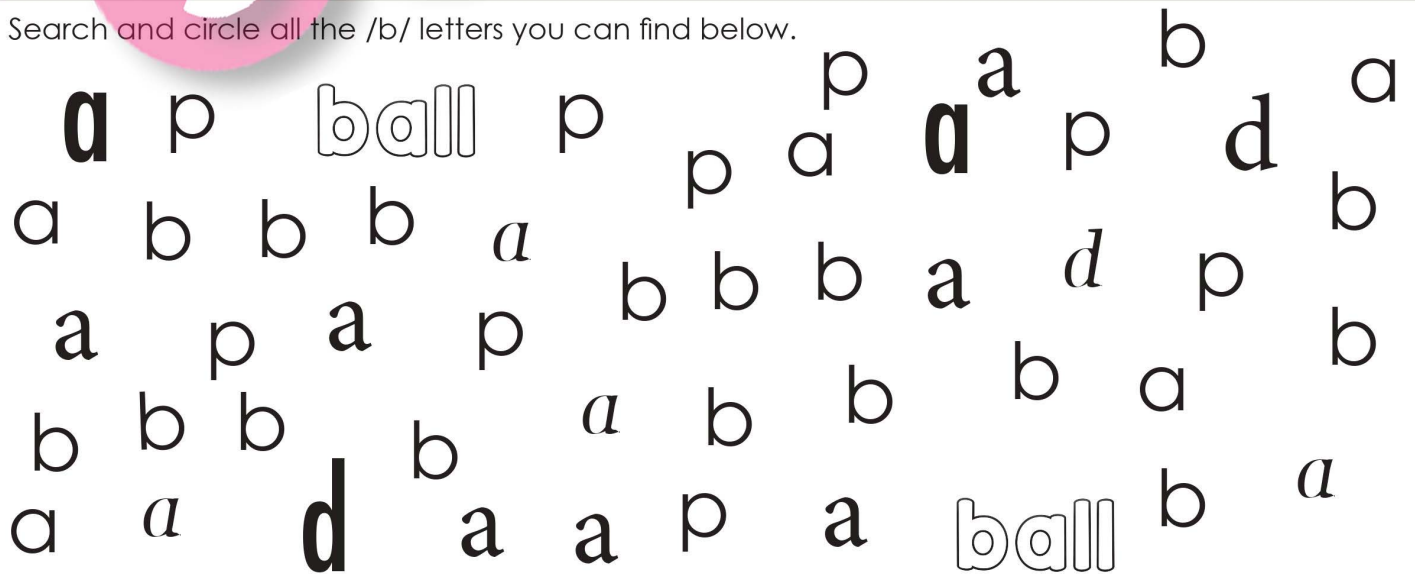


Color the spaces that have a /b/ letter in them. Find and color all the letters /b/.



Search and circle all the /b/ letters you can find below.



# Phonics

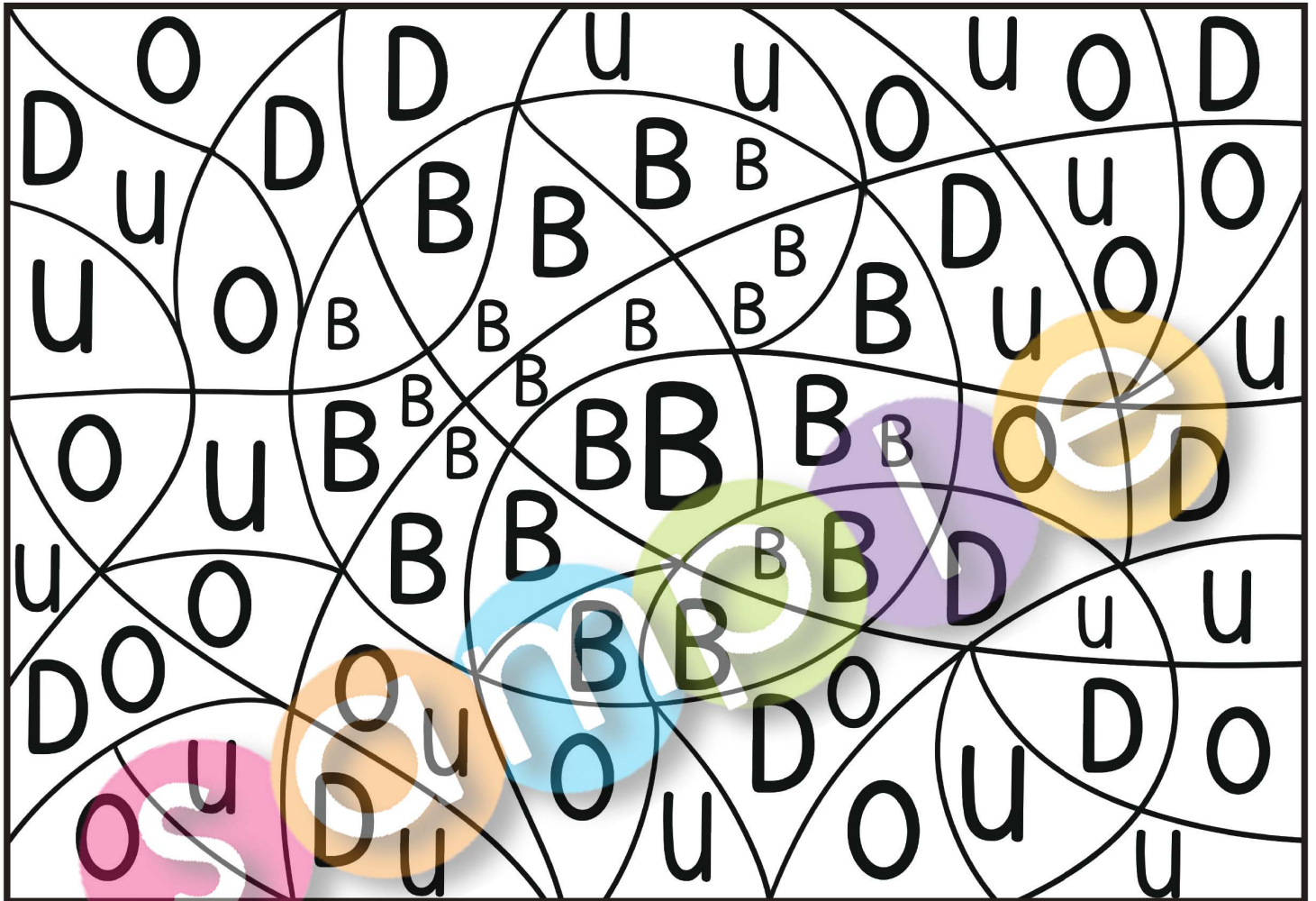


Name \_\_\_\_\_

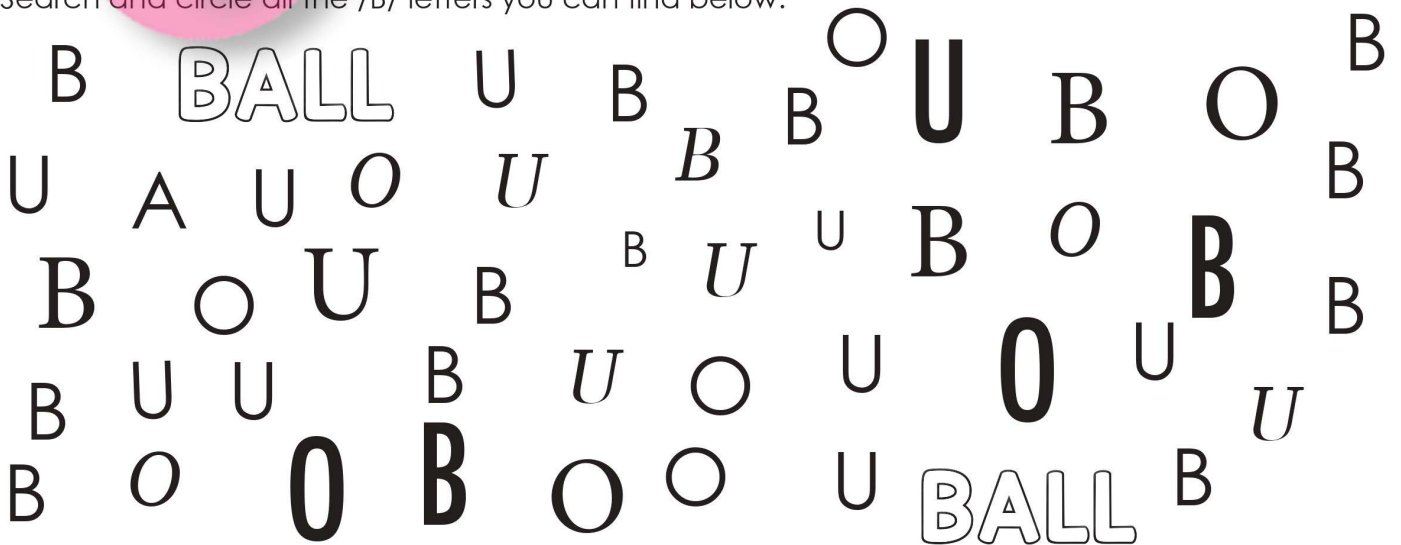
Color the spaces that have a /b/ letter in them. Find and color all the letters /b/.

The main activity area is a large rectangle filled with a grid of overlapping circles. Each circle contains a lowercase letter, either 'a' or 'b'. The letters are scattered throughout the grid, and the circles overlap in a way that creates a complex pattern. The letters 'a' and 'b' are printed in a simple, bold, black font. The background of the circles is white, and the lines of the circles are black. The overall layout is designed for a coloring activity where students identify and color the spaces containing the letter 'b'.

Color the spaces that have a /B/ letter in them. Find and color all the letters /B/.



Search and circle all the /B/ letters you can find below.





# Phonics



Name \_\_\_\_\_

Color the spaces that have a /B/ letter in them. Find and color all the letters /B/.

A large grid of overlapping circles, each containing a letter. The letters are D, U, O, and B. The circles are arranged in a pattern that allows for identifying the letter /B/ within the grid. The letters are scattered throughout the grid, and the circles overlap significantly.